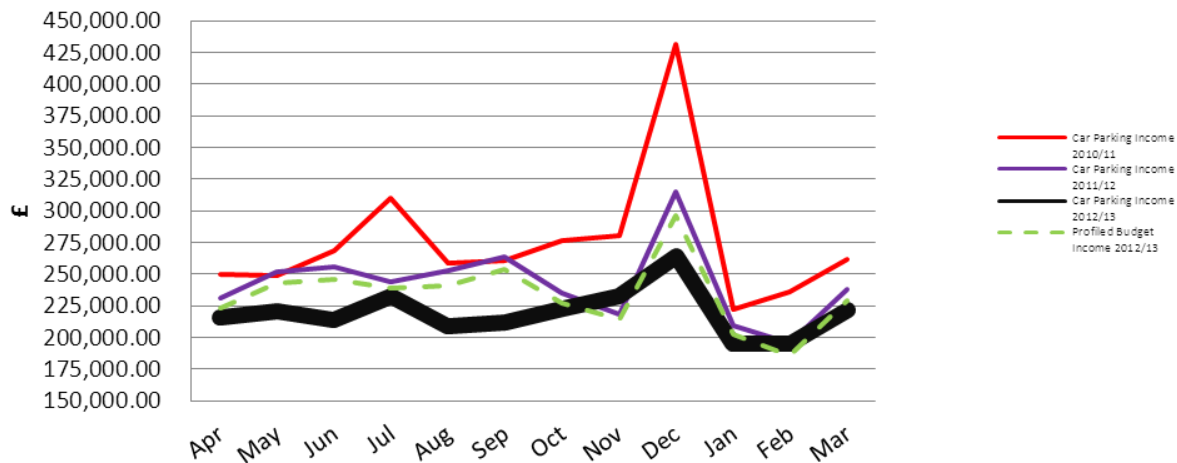
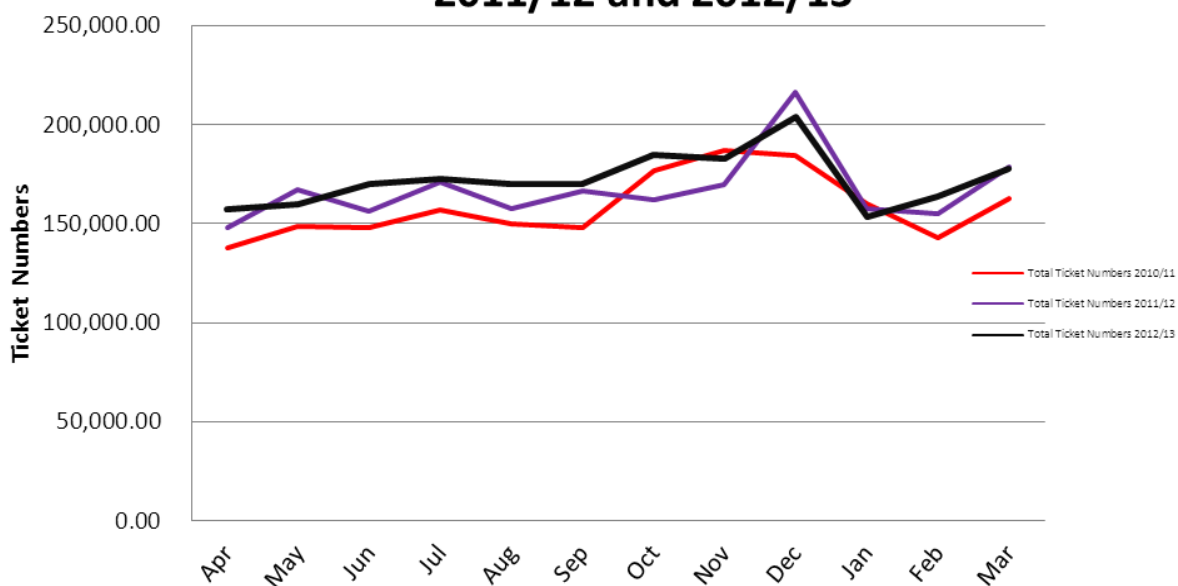


Total Daily Ticket Income 2010/11, 2011/12 and 2012/13



Total Summary Ticket Numbers 2010/11, 2011/12 and 2012/13



Notes:

- Income for 2012/13 was £166k lower than budgeted, (Budget £2,799k), and £274k less than in 2011/12.
- The volume of tickets sold during 2012/13 was 61k higher than in 2011/12.
- St John's Surface Car Park: closure was effective from 15 June.
- Budgeted Income for 2013/14 £2,599k.